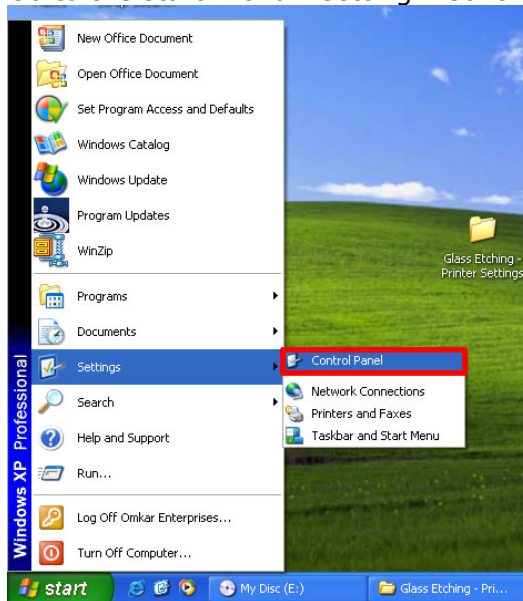


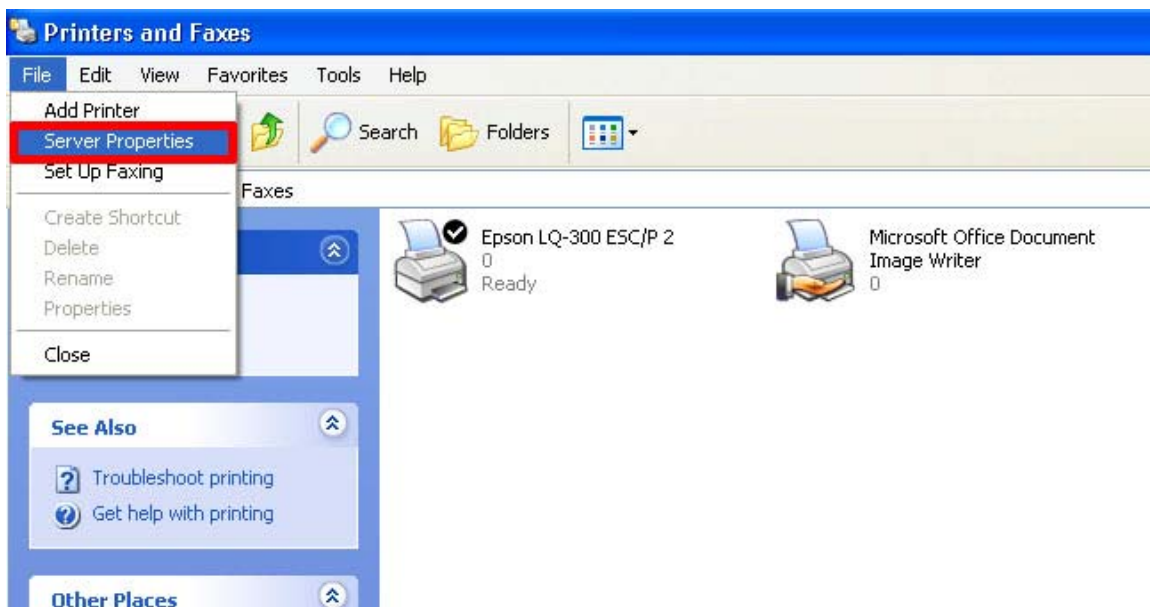
Please do the following setting for glass etching in Microsoft Windows XP

1) Go to the start menu >setting >Control Panel



2) Open "Printers and Faxes"

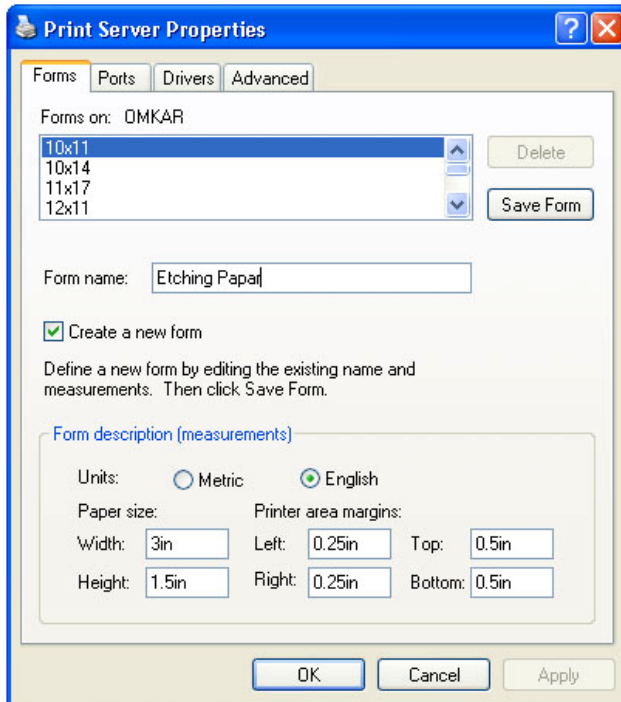
3) Go to the file menu, Click on the Server Properties



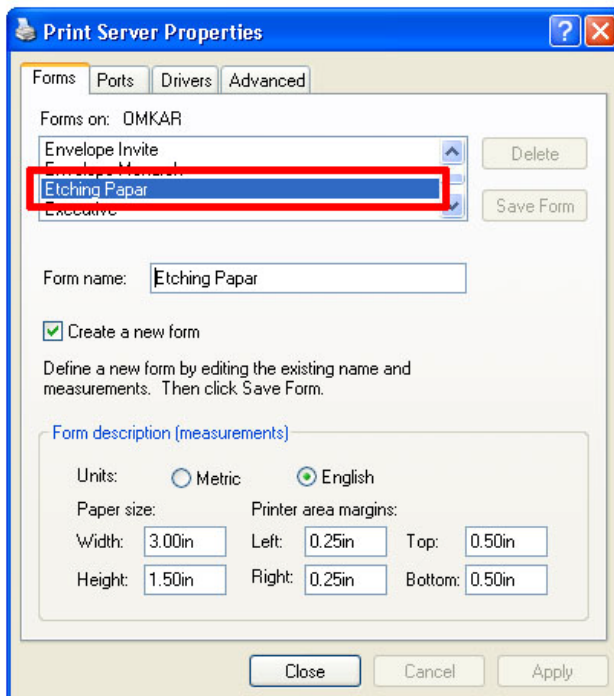
4) In forms tab insert form name "Etching Paper"

5) check "Create a New Form"

6) In paper size fill the figure as shown in figure.



7) Click "Save Form" > see the image

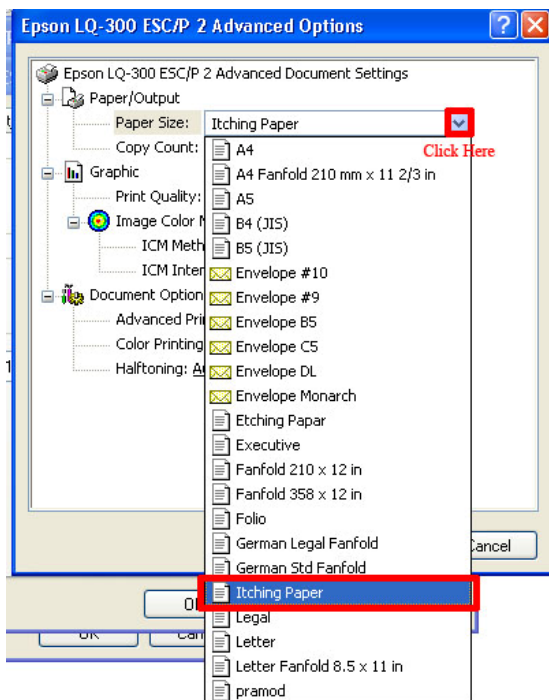


8) Close the window

9) In printer & faxes window > right click on the dot matrix printer (which you use) and go to the "properties"

10)Click on the printing preferences > Click on advance button

11) Choose paper size "Etching paper" (You can find "etching paper" in drop down list)

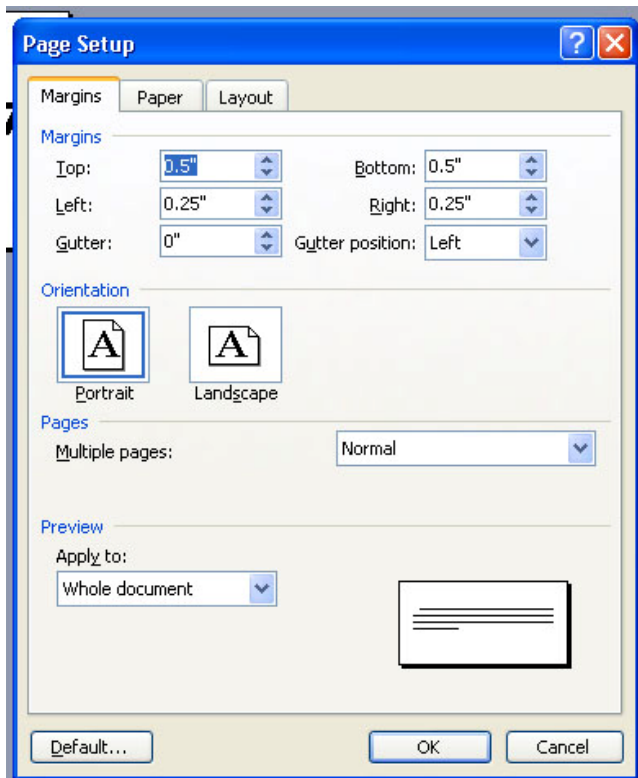


12)Close all the windows

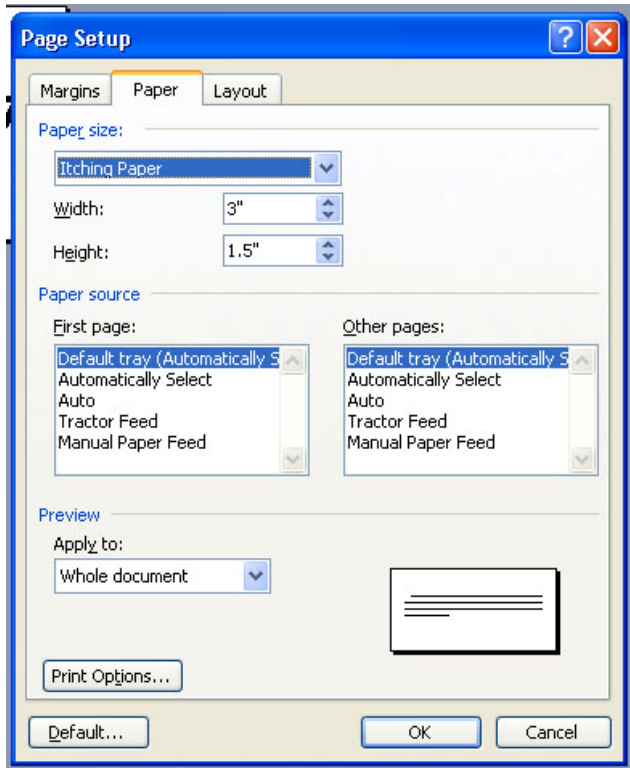
13)Open a Microsoft word Document

14)Go to file menu > click on "page setup"

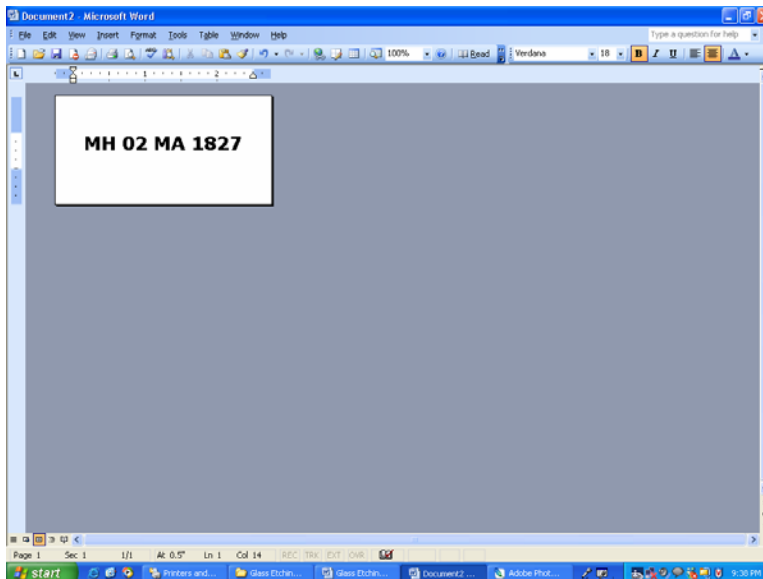
15) Fill the figures shown in the image



16) In Paper tab > Select Paper size in dropdown list "Etching Paper"



17) Click on OK the document look like



18) Type a vehicle Registration Number on Microsoft word document, font size-18, font naming - **VERDANA-Bold**. (Do not use sharp font).

19) Take a print on stencil and etch the Registration numbers on every glass of vehicles